

General Staff Meeting

September 19, 2023

SIMON FISHER



Agenda, Staff Meeting September 19, 2023

(14:30 – 17:30)

1. News from the MD
 - a. Departures and Arrivals
 - b. PhD defenses
 - c. Upcoming events
 - d. Honours and awards
2. News from Data Protection Committee
3. News from TG
4. News from Research Facilities Committee
5. News from Communications
6. News from Colloquium Committee
7. News from Library Committee
8. News from Diversity, Equity & Inclusion Committee
9. News from Research Staff Committee
10. News from Equal Opportunities
11. News from Ombudsperson

Presentation by Ellen Verhoef
***Genetic influences underlying early language development
and their links with later-life traits***



Departures and arrivals

Research Staff (RS), PhD students, other staff and long-term guests leaving

Yannick Jadoul	30.09.23
Natalia Levshina	30.09.23
Mante Nieuwland	14.10.23
Hans Rutger Bosker	30.11.23

New Research Staff (RS) and PhD students (present)

Sepideh Damirchi	PhD	01.08.23
YaSuei Cheng	Lab. Manager	01.08.23
Sharice Clough	RS	15.08.23
Kyla McConnell	RS	01.09.23
Julia Chauvet	PhD	01.09.23

New Research Staff (RS) and PhD students (expected)

Zara Harmon	RS	01.10.23
Judith Holler	RS	01.10.23
Lanmiao Liu	PhD	01.10.23
Lois Dona	PhD	01.10.23
Eduardo Gornetti	PhD	01.10.23

New Guests (present)

Reyna Gordon	RS	10.09.23 – 09.12.23
Saishuang Wu	PhD	01.09.23 – 31.08.24

New Guests (expected)

Mengxing Wang	PhD	01.10.23
---------------	-----	----------

Department/Group

Neurobiology of Language
Multimodal Language
Multimodal Language
Psychology of Language
Psychology of Language

Department/Group

Language Development
Multimodal Language
Multimodal Language
Multimodal Language
LaCNS

Host

Language & Genetics
Language Development

Host

Psychology of Language



PhD defense since last Staff Meeting



Kang-Suk Byun on June 22
“Establishing intersubjectivity in cross-signing”

Upcoming PhD defenses



Julia Egger on November 16
“Need for Speed?
The role of speed of processing in early lexical development”



Naomi Nota on December 6
“Talking faces:
The contribution of conversational facial signals to language use and processing”

PhD representatives – who are we?



Orhun Uluşahin **PoL**



Clara Kunst **LaDD**



Danielle Admiraal **L&G**



Tianai Dong **MLD**



Sara Mazzini **NBL**
External PhD Rep

phd-reps@mpi.nl



Upcoming Events – Vitality Days

Tuesday 26 and Thursday 28 September

Various activities take place all afternoon on the theme of vitality and health:

- **fun and interesting workshops, lectures and activities in the area of exercise, healthy food, lifestyle, vitality, physical and mental health**
- **possibility of getting a free health check**
- **healthy snacks will be offered during these afternoons**

Full programme on MaxIntra:

<https://maxintra.mpi.nl/news/vitality-days-at-the-mpi>

Limited space - please sign up!

http://lux102.mpi.nl/forms/vitalityday_registration

This link only works within in Institute or if you log in remotely; registration closes on 25 Sept!



Upcoming Events

October 5

[Masterclass Profielwerkstuk](#)

October 13

[Symposium in Honor of the Publication of P. Seuren's last book](#)

October 25 - 27

[Many Paths to Language \(MPaL\) 2023](#)

November 13 - 16

Notes from the Future (Workshop around the Bruner Library)

December 12

MPI General Staff Meeting and End of Year Event

Upcoming Events 2024 – Save the dates

April 3-5, 2024

The Neurobiology of Language Department: The Legacy

June 5 – 7, 2024

IMPRS Conference 2024

July 8-11, 2024

Language in Interaction - Closing Conference

MPI General Staff Meetings 2024

March 12

June 04

September 17

December 17

MPI Proudly Presents 2024

July 04

MPI – Donders Institute

Donders Sessions & Theme Meetings hosted at MPI in 2024

January 18, 2024

May 16, 2024

Honours and awards - Congratulations

Peter Hagoort was honoured with the Silver Radboud University Medal at the Opening Ceremony of the Academic Year on September 4th.



Honours and awards

Lot Snijders Blok and Micha Heilbron were awarded the Otto Hahn Medal at the Max Planck Society's Annual Meeting on June 21st

Micha Heilbron also received the Otto Hahn award.



Data Protection

**Updates staffmeeting
19-9-2023**

Patricia Manko



Data Protection Committee



Annelies v. Wijngaarden
DPCo Deputy



Dick Schijven
L&G



Jeannette Peters
Operations



Karin Kastens
Equal Opportunities,
Library



Kevin Lam
IMPRS



Mante Nieuwland
NBL



Patricia Manko
DP Coordinator



Reiner Dirksmeyer
TG

Reminder: Data Protection Training

- Mandatory for all employees, **also for interns, lab rotation students, guests**
- Haven't received training yet? Contact us!



Updates

- Updated Privacy Policy MPI website
<https://www.mpi.nl/page/privacy-policy>
- External links on our website now marked with small symbol

Contact form: <https://www.mpg.de/contact/requests>
Internet: <https://www.mpg.de>

Work in progress

- Experimental key file management
- Deletion protocols for different types of personal data



Questions?

privacy@mpi.nl

Data breach?

Contact: data-breach@mpg.de & privacy@mpi.nl

TG

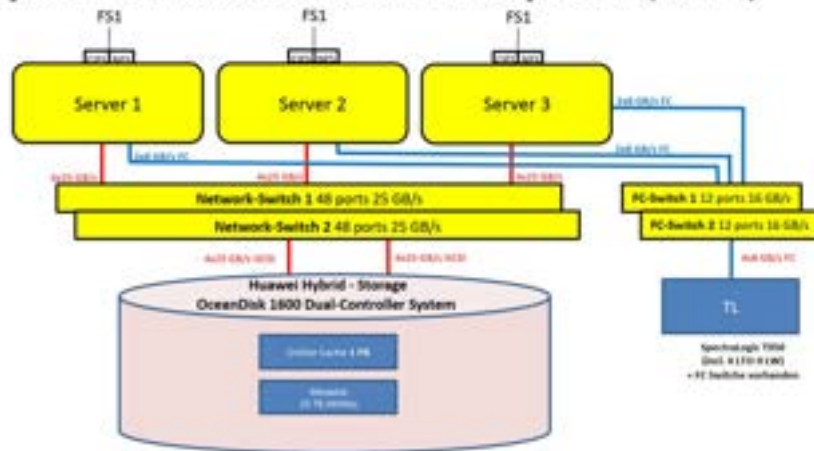
STAFF meeting 19 September 2023



Short report:

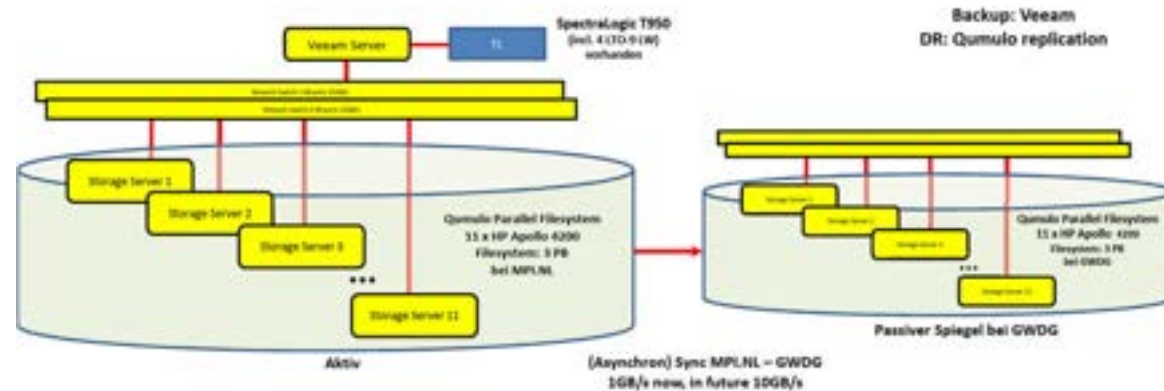
- **New tape devices: migration status**
 - LTO-9 (18 TB per tape, LTO-7: 6 TB)
 - Data migration started in Dec-22
 - migration is completely done!
- **BAR request: New Storage Infrastructure, second submission**

Systemaufbau ScoutAM Filesystem (HSM)



Kosten: 510.000 EUR für 1 PB Online Cache, Lizenz für max. 5 PB (incl. 5 Jahre Wartung/Lizenz)
 Stromverbrauch: Typical 2.3 KW, IOPS: 545.685

Systemaufbau Qumulo Filesystem (redundant)



Kosten: 1.132.226 EUR (incl. 5 Jahre Wartung/Lizenz)
 Stromverbrauch: Typical 8.2 KW



Short report:

- Use GWDG archive system to archive old data

Storage services

DATA ARCHIVING

Manual
FAQ
Support

Your Requirement

You would like to permanently store and protect files of a completed project or a large collection of data, which will seldom be used or used only after several years. You look for long-term archiving of research data to adhere to good scientific practice and common data policies.

Our Offer

We operate tape archive servers to provide long-term storage for large files with hierarchical storage management (HSM) for easy access. Files are migrated to tape storage automatically if not in use, and transparently recovered within minutes when accessed again. In addition we offer services to store structured datasets where metadata should remain searchable even in archived state. We are happy to support your efforts in integrating long-term archiving into your data management process or help you plan migrations of particularly large data collections.

Preconditions

Every user with a valid GWDG account can use the archiving service.

Advantages

- You do not need an archiving infrastructure of your own, a network connection is sufficient.
- You can permanently and safely store large amounts of data.
- The data is redundantly stored with at least two tape copies in two different locations.
- You can mount the archiving directory as a normal network drive independently of your operating system.

- Data to archive: 250 TB (MPI-digi-team, DOBES-digi-team, lac, comprehension, stis)
- Other in future: 250 TB (nvc, gesture, ...)

Usage on UNIX/Linux

Each user of GWDG's UNIX cluster owns a directory `/usr/users/a/Username` as archive storage. So for the username `jsmith` it is `/usr/users/a/jsmith`.

It can be used as a normal UNIX directory. The environment variable `$HOME` refers to this path.

It is recommended to compress directories as tar files before saving to the archive, for example: The user `jsmith` wants to archive the files of his subdirectory `data`. He uses the commands

Short report:

- **Phone system:**
 - migration is done, our phone system is now part of the MPG phone system.
- **Two-factor-authentication (2FA):**
 - 2FA is active and required for remote **ssh** access **since 01-Sep-23**
 - 2FA for **remotedesktop2** will be active and required on **01-Oct-23**
 - 2FA for **remotedesktop1** will be active and required on **18-Oct-23**
 - 2FA for **remote desktop** access to **individual PC** will be active and required on **01-Nov-23**
 - 2FA for **VPN**: we would like to renew our VPN service (OpenVPN?, WireGuard?) and will coordinate this with GWDG.
 - GWDG/MPG Services (not email web access)
 - As soon as you have a token defined, 2FA will be used if you want to access MPG services like: <https://max.mpg.de>, <https://ohb.mpg.de>, <https://sbportal.sap.mpg.de>, <https://extranet.mpg.de> (but NOT not email web access)

Research Facilities Committee

RFC September 2023 meeting summary

RUTH CORPS



Renewing storage hardware

- TG's request for upgrading to a Qumulo file system was rejected because it was too expensive
- RFC supported TG's new request to continue the current HSM system in a new version (20% SSD, an increase in data storage to 1PB). TG expects to hear back from the MPG at the end of September

Recommendations from RFC

- RFC recommends using the new (SNAP) electrodes for new EEG experiments.
 - The old electrodes cannot be ordered and replaced, and so are no longer supported
 - These will stay in the labs for now, but may be removed at a later date
- RFC recommends using online platforms (such as Gorilla and Frinex) for online experiments
 - These platforms have extensive support – Maarten van den Heuvel and Thijs Rinsma can help with programming
 - But note timing inaccuracies in online experiments (100-200ms out) because participants are using different hardware/software/internet connections – contact Maarten in the first instance if you are concerned about timing
- But general licenses for Qualtrics are also available (10 for LaDD, 3 for each department, 1 for research groups, 1 for MPI general use)
 - Contract Patricia Manko if you wish to use a license

Timing issues in Presentation

- Timing is not always accurate in Presentation if using the default settings with audio/video stimuli
 - This is an on-going issue, even if you use scripts created by other researchers

You are here: [Home](#) → [Research](#) → [Experimentation](#) → [Technical information](#) → [Presentation support](#)

Presentation support

Presentations is the supported software for hardware configurations in the basic behavioral experiment rooms, EEG lab, and Tobii eye trackers.

For hardware questions contact Johan Weustink or the lab manager.

Presentation is a stimulus delivery and experimental control software system for neuro-science. It was designed for behavioral and physiological experiments that collect fMRI, ERP, MEG, reaction time, and electro physiological data. **Presentation** has many features that make it applicable to a diverse range of applications **Presentation** is also completely programmable with help of a description- and a control language. More information on **Presentation** and on the Pipeline code project can be found on [Christian Forkstam's website](#).

If you need to set up a new experiment you can ask for support from Maarten van den Heuvel. Send him an e-mail and describe your experiment as detailed as possible.

!WARNING! If you use **audio or video stimuli** requiring accurate timing, **Presentation** requires things to be set up in a specific way which may not be intuitive. Please contact Maarten (via a TG-ticket, helpdesk@mpi.nl) to ensure that the settings are correct! See also [this document](#).

Relevant documentation

- [Presentation and system sound settings on a Windows 7 platform](#)
- [Audio settings in Presentation](#)

Communications



MARJOLEIN SCHERPHUIS



Communications Team



Marjolein Scherphuis
Julia von der Fuhr
Ludy Cilissen

Communications@mpi.nl



Advice and support from the Comms Team

- Press releases, media requests, media coaching
- Advice on internal and external communications
- Advice on inclusive writing
- Corporate identity issues
- Website issues
- **Templates for theses covers and participant recruitment flyers**
- **Picture data bank**
- Your contributions for the internal newsletter

- And any other question regarding pr, communication and public outreach

Communications@mpi.nl



MPI-ers are going places!

1. Take a bag
2. Take a picture
3. Send an email to communications@mpi.nl

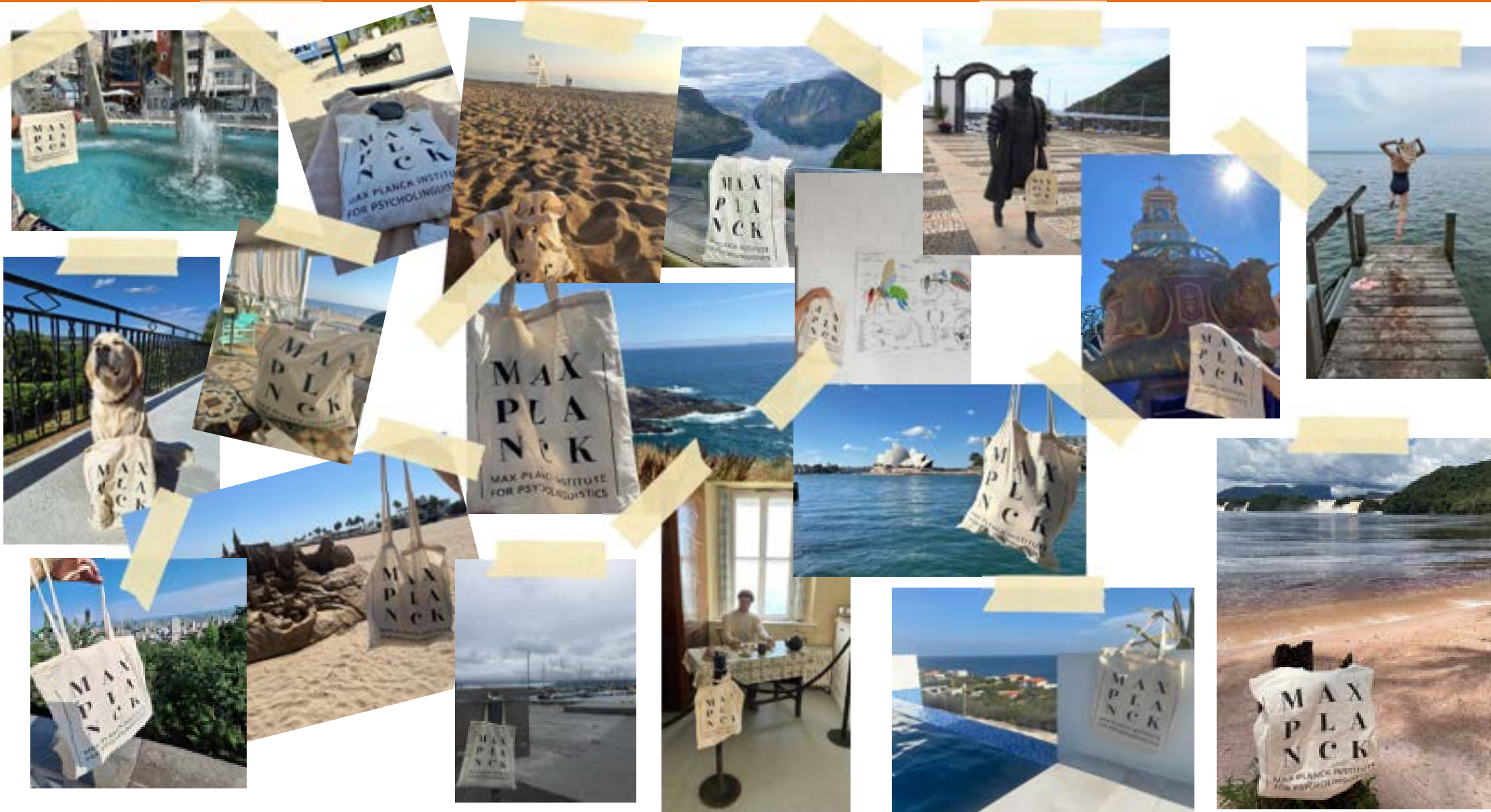
Freiburg



Cape Verde

New York





New IMPRS profiles

Thanks to Sandra, Sho, Lucía, Elena, Imke and Sophie

SANDRA ON A SUPPORTIVE WORKPLACE



Name: Sandra Böhler
Department: Psychology of Language
Research: How individual differences in language processing are used in conversation
Started at the IMPRS: 2021
Nationality: German



How did you come to pursuing your research topic in Nijmegen?

I'm one of the few "dual" linguists at this institute, with a Bachelor's and Master's degree in Linguistics. During my postgraduate studies at WHU Düsseldorf, I was focused on experimental research in psycholinguistics, while simultaneously working a part-time job as ML. Reading a paper on individual differences in morphological processing completely changed my way of thinking about the field, so I started networking with researchers interested in the same topic – individual differences in language processing – which, ultimately, led me to the IMPRS.

What are some of the highlights of your doctoral life so far?

It's easy to feel overwhelmed in a place where everyone is on top of their game. However, this also means that there are plenty of opportunities to grow and learn from one another. My previous working experiences have taught me that any job is really just as good as its team, so it was very important for me to become part of a supportive working environment. That does not only limit itself to my fellow PhDs, but also includes the support staff at the institute as well as my supervisors. We're a team – we thrive, but also struggle together.

"We're a team – we thrive, but also struggle together"



MPI TalkLing: New editor-in-chief



MPI  **TalkLing**
MAX PLANCK INSTITUTE FOR PSYCHOLINGUISTICS



International Stuttering Awareness Day

Else Eising L&G

www.mpi.nl/wereldstotterdag23

MAX
PLANCK

MAX PLANCK INSTITUTE
FOR PSYCHOLINGUISTICS



Max Planck Institute >

Doe mee aan de 'vraag & antwoord' over stotteren

DOE MEE AAN DE 'VRAAG & ANTWOORD' OVER STOTTEREN

Op 22 oktober 2023 is het Wereldstotterdag. In aanloop naar die dag verzamelen wij bij het Max Planck Instituut voor Psycholinguïstiek jullie vragen over stotteren en over wetenschappelijk onderzoek naar stotteren. Op Wereldstotterdag publiceren we alle vragen voorzien van een antwoord. Je kunt tot vrijdag 22 september 2023 je vraag indienen. Deze zal worden beantwoord door wetenschapper Else Eising. Zij komt hieronder aan het woord en vertelt waarom zij graag wil weten welke vragen er leven over stotteren. Onderzoekers [Marie-Christine Franken](#) en [Lottie Stipdonk](#) van het Erasmus MC in Rotterdam zullen helpen alle vragen te beantwoorden.

Doe je mee? Stel dan hieronder je vraag!



Else Eising

Onderzoeker naar stotteren
stotteren@mpi.nl
www.geneticavanstotteren.nl

MAX
PLANCK

Participant Recruitment



Questions?



Colloquium committee

Staff meeting September 2023

SERGIO SOARES



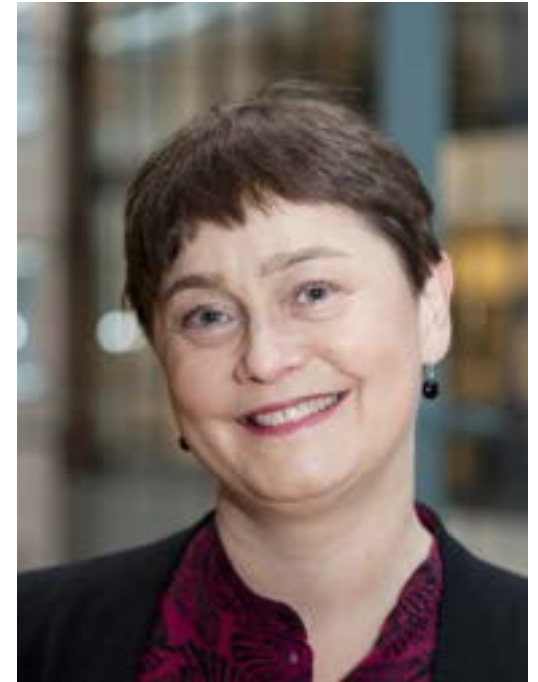
Next MPI Colloquium in 2023

PROF. DR. RIITTA SALMELIN

26 SEPTEMBER 2023 16:00 - 17:00

Language in the brain: from descriptions of functions to modelling of representations and mechanisms

Hosting Department: NBL



If you would like to meet with Prof. Dr. Salmelin, please contact maria.spychalska@mpi.nl.

Upcoming colloquia 2023/24



- **October 12th:** Prof. Dr. Geoffrey Pullum (University of Edinburgh) *NBL*
- **November 7th :** Marieke Schouwstra (VU Amsterdam) *MLD*
- **November 28th :** Claudia Maennel (Charité – Universitätsmedizin Berlin, MPI-CBS) *LaDD*
- **January 16th :** Riccardo Fuaroli (Aarhus University, Denmark) *MLD*
- **February 20th :** TBA
- **March 19th :** Aniruddh Patel (Tufts University, Boston, USA) *L&G*

Currently planning the first half of 2024...

Please send us any suggestions for future **Colloquium** speakers!!



Barbara Molz (L&G)

Barbara.Molz@mpi.nl



Candice Frances (PoL)

Candice.Frances@.mpi.nl



Sergio Soares (LaDD)

Sergio-Miguel.Pereira-Soares@mpi.nl



Ezgi Mamus (MLD)

Ezgi.Mamus@mpi.nl



Rinus Verdonschot (NBL)

Rinus.Verdonschot@mpi.nl

Library Committee Report

Staff meeting 19 September 2023

KARIN KASTENS & LIBRARY COMMITTEE



New Elsevier Agreement

- German Research Consortium (DEAL) and Elsevier signed 5 year agreement
- MPG will participate
- What does it include:
 - Read access to Elsevier, Lancet, Cell Press journals
 - Open access fees paid by MPG for all hybrid and gold open access articles for submitting corresponding authors
- Projected start for MPG: early/mid October

Details to be announced via Newsletter

Notes from the Future

13 November 2023 - 16 November 2023

The Max Planck Institute for Psycholinguistics in Nijmegen and the Max Planck Institute for the History of Science in Berlin join together for a workshop around the Bruner Library.



This workshop consists of two parts.

- In the first part (November 13th-14th) we use Bruner's library as a prism to look at the scientific production in psychology and social science over the twentieth century, as well as analyze the role of the archive and libraries in the research practices.
- In the second part (November 14th-16th), we focus more specifically on the paradigm shifts from behaviorism to cognitive science to neuroscience.

Organising committee: Pim Levelt, Jürgen Renn, Asli Özyürek, Pina Marsico, Virginia Dazzani, Karin Kastens, Rocco Gaudenzi, Ariel Furstenberg, Edith Sjoerdsma

Talks are open to everyone at the institute, program to be announced via Newsletter/MaxIntra

Miscellaneous

Open Science Ambassador(s) – call for volunteers

- Open Science Ambassadors are early-career-researchers (ECR) of the Max Planck Society interested in open science topics and its systematic implementation
- <https://osambassadors.mpdl.mpg.de/ambassadors/>
 - Represent MPI at OS meetings of MPG
 - Work together with library and others to promote OS
 - ...

Invoices concerning publishing costs

- If you get an invoice for a journal article (open access) publishing fee and you didn't expect is, please contact library@mpi.nl

Suggestions

- please remember we are always are looking forward to your suggestions
 - for subscribing to an additional journal
 - to order a book (print/electronic/both) for the library or any other material

Library Committee Members

<http://maxintra.mpi.nl/representation/Library%20committee>



Andrea Martin (chair)
Language and
Computation in
Neural Systems



Mubeen Khan
Language and
Genetics
Department



Eleanor
Huizeling
Neurobiology of
Language
Department



Chih Yeh
Language
Development
Department



Library staff
Karin Kastens; head of library
Meggie Uijen; assistant
librarian

email: library@mpi.nl

Diversity & Inclusion at MPI

Staff Meeting 19 September 2023

CANDICE FRANCES – D&I CHAIR



Who we are

The Diversity and Inclusion Committee (Candice Frances)

Our goal is to improve diversity, equity and inclusion at MPI in three key areas:

- Attracting Diversity to MPI-PL (Julia von der Fuhr)
- Diversity and Inclusion at MPI-PL (Sandra Bethke)
- Diversity in our Science (Barbara Molz)



New things since June

- SAP/SAT (Social Activity Planning/Team)
 - Came out from the Survey
 - Join us!
- Tuesday 26 and Thursday 28 September, during the **Dutch Vitality Week**, various activities will take place all afternoon on the theme of **vitality and health**.



New things since June

- TALENT+ Program (MPG Diversity Fund Funding)
 - The program will provide relevant experience and skills in Cognitive Science to individuals from underrepresented communities.
 - Contains three strands: paid internship scheme, research assistant scheme, and TALENT scheme (already underway).
 - The program is jointly funded by the MPI and a grant from the Max Planck Society Diversity Excellence Fund.
 - **Looking for a coordinator!!** (paid position, 20hs a week)



How to get involved in the D&I movement

- Join the Committee (or subcommittees)
 - Email diversityinclusion@mpi.nl (note these emails are received by all committee members)
 - Email candice.frances@mpi.nl (chair)
- Email ideas and suggestions to the committee
- Do/support diverse and inclusive science!
 - Collection of articles from Nature Human Behavior: <https://www.nature.com/collections/daficfhiff>



Research Staff Committee

YAYUN ZHANG



Purpose of the Committee

- Forge connections between research staff members across departments (e.g., organizing social events or workshops).
- Provide support for research staff members with issues that are broader than those that can be addressed within their department (e.g., COVID policies, administration issues, training opportunities, or career planning).
- External staff representative represents the scientific staff of our institute at MPG-wide meetings

Looking for new external staff representative



Yayun Zhang
Research Staff Rep.
(Chair)



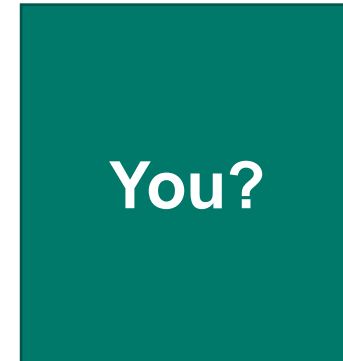
Joery den Hoed
Research Staff Rep.



Sharice Clough
Research Staff Rep.



Nienke Rulkens-Dijkstra
Research Support Staff Rep.



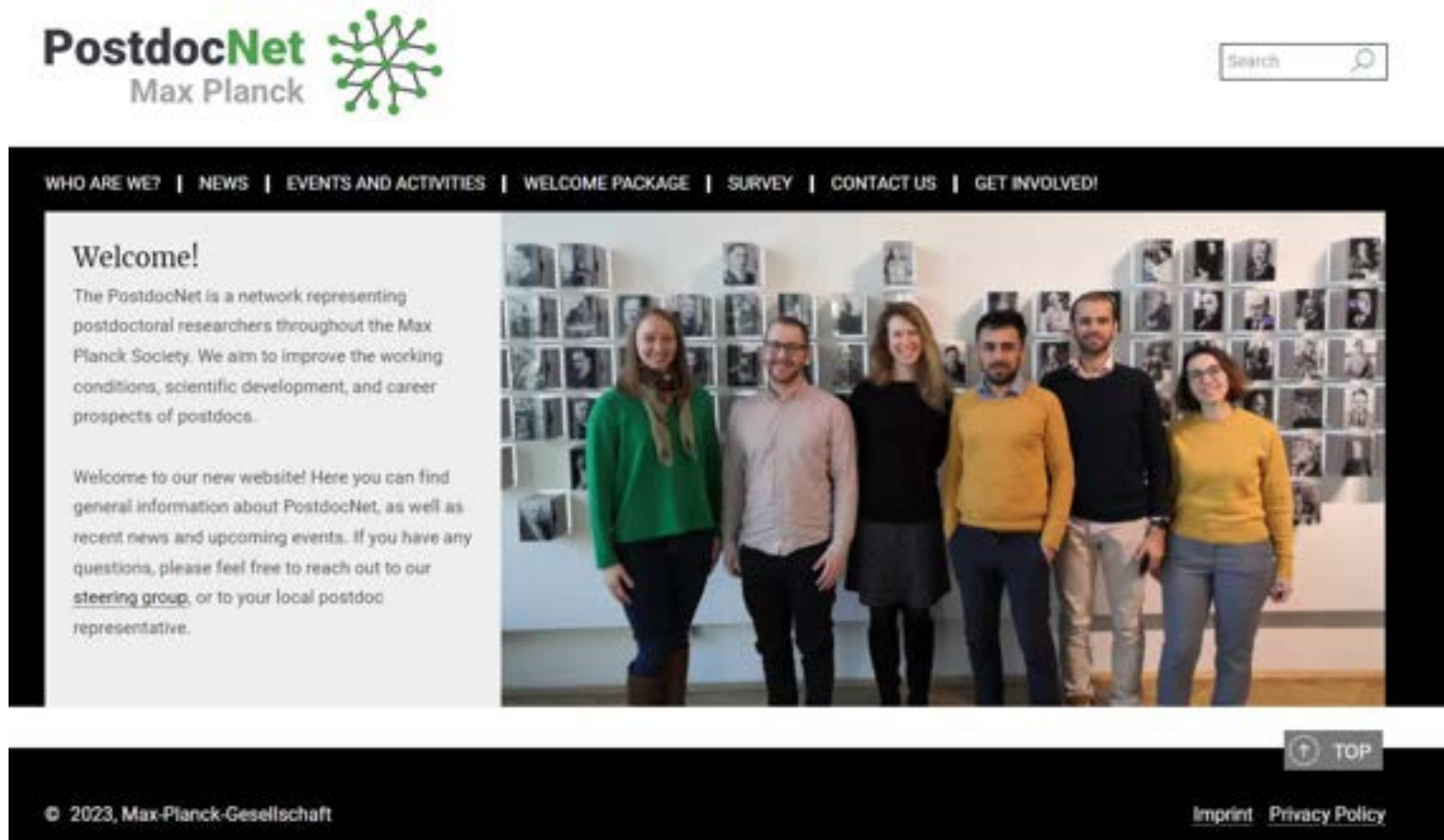
You?
External Staff
Rep.

Interested?

Email: RSC@mpi.nl



Elections new PostdocNet External Representative



The screenshot shows the homepage of the PostdocNet Max Planck website. At the top left is the logo for PostdocNet Max Planck, featuring a green network icon. To the right is a search bar with the text "Search" and a magnifying glass icon. Below the logo and search bar is a navigation menu with the following items: WHO ARE WE? | NEWS | EVENTS AND ACTIVITIES | WELCOME PACKAGE | SURVEY | CONTACT US | GET INVOLVED!.

The main content area is divided into two columns. The left column has a heading "Welcome!" followed by a paragraph: "The PostdocNet is a network representing postdoctoral researchers throughout the Max Planck Society. We aim to improve the working conditions, scientific development, and career prospects of postdocs." Below this is another paragraph: "Welcome to our new website! Here you can find general information about PostdocNet, as well as recent news and upcoming events. If you have any questions, please feel free to reach out to our [steering group](#), or to your local postdoc representative."

The right column features a large photograph of six people (three women and three men) standing in front of a wall covered with many small portrait photos of individuals. The people are dressed in casual business attire.

At the bottom of the page, there is a dark footer bar. On the left, it says "© 2023, Max-Planck-Gesellschaft". On the right, there are links for "Imprint" and "Privacy Policy". In the center-right of the footer bar, there is a "TOP" button with an upward-pointing arrow.

MPI now full member of Donders Institute

Network organisation

The Donders Institute for Brain, Cognition and Behaviour is a network organisation of the Radboud University, consisting of six partnering institutes:



- Donders Centre for Cognition (DCC);
- Donders Centre for Cognitive Neuroimaging (DCCN);
- Donders Centre for Neuroscience (DCN);
- Donders Community for Medical Neuroscience (DCMN);
- Max Planck Institute for Psycholinguistics (MPI);
- Centre for Language Studies (CLS).



Joery den Hoed
Research Staff Rep.

POSTDOC PONDERERS!

A series of events organised by the Donders Institute
Postdoc Council for Donders Institute Postdocs.

Inaugural event on:

10th October 2023
16:00 - 17:30
HUYGENSGEBOUW
[HG00.062]

PROJECT MANAGEMENT:

Get tips and tricks for managing research projects in the early years of your career from a panel of the Donders Institute's experts.

More postdoc events!

<i>Month/Year</i>	<i>Event Theme</i>
<u>Oct 10th</u> <u>2023</u>	 <p>POSTDOC PONDERERS! A series of events organised by the Donders Institute Postdoc Council for Donders Institute Postdocs.</p> <p>10th October 2023 16:00 - 17:30 HUYGENSBOUW (#C00.062)</p> <p>PROJECT MANAGEMENT: Get tips and tricks for managing research projects in the early years of your career from a panel of the Donders Institute's experts.</p>
November 2023	Industry (CV tailoring, career coaching, approaching industry)
January 2024	Academic (CV tailoring, job negotiations, conflict resolution)
March 2024	Grants – which grants are available, where to get funding for different purposes (staff, equipment etc.)
May 2024	Grant writing + narrative CVs (persuasive writing styles)

Social event

Time: Nov 15th (Wed) at 17:30 (Tentative)

Location: Cultuurcafe



Contact information

RSC@mpi.nl

Equal Opportunities

Staff meeting 19 September 2023

KARIN KASTENS, NATALIA LEVSHINA & MAGGIE WONG



Gender Equality Officers (GEO's)

Who are we?

- Every Max Planck Institute has gender equality officers.
- We support everyone!

What do we do?

- Point of contact for employees for concerns/issues about inequality, discrimination, harassment
- Structural involvement
 - Increase visibility of Gender Equality Work and Support channels
 - We closely work together with the Diversity & Inclusion Committee, participate in projects like the Vitality Event
 - Regular meetings with MD, HR, COO, & the othersupport channels



From left to right:

- **Natalia Levshina** (deputy GEO)
- **Karin Kastens** (GEO)
- **Maggie Wong** (deputy GEO)



Information for Newcomer Events 2023

- 21 September 10am, room 163
- 23 November 10am, room 163



Gender Equality Plan 2024-2026

The current plan needs to be updated. That's an obligation from the MPG.

If there is an issue / problem you think we should address in the new plan, please come or send an email.

Contact Equality Officers

Info:

Equal Opportunities on MaxIntra

<http://maxintra.mpi.nl/representation/EqualOpportunitiesOfficer>

Equal Opportunities on mpi.nl

<https://www.mpi.nl/page/equal-opportunities>

Contact:

Email: equality@mpi.nl

Ombudsperson

Staff meeting September 19, 2023

BEATE ST POURCAIN



Participation in the Donders Institute research integrity scheme



Lead: Edward de Haan



- Integrity officers in the DCN, DCMN, DCC, DCCN and the MPI
- Low-threshold advisors for students and staff who have questions about research integrity
- Knowledge exchange and cooperation across the DI partners
- MPI staff will still come to the MPI officers, and DI staff to the DI integrity officers

Contact



The screenshot shows a contact page for Dr. Beate St. Pourcain. At the top left is the Max-Planck-Gesellschaft logo, followed by the text "MAX-PLANCK-GESELLSCHAFT" and a hamburger menu icon. Below this is a breadcrumb trail: "Homepage > Dr. Beate St. Pourcain". The main content area features a black silhouette of a person's head and shoulders on the left. To the right of the silhouette, the text reads: "Dr. Beate St. Pourcain", "Max Planck Institute for Psycholinguistics", a telephone icon followed by "+31 24-3521964", and an envelope icon followed by "Beate.StPourcain@mpi.nl". Below this section, the heading "Special Function:" is followed by a bullet point: "• Ombudsperson in the HS (Human Sciences Section)".

MAX-PLANCK-GESELLSCHAFT

Homepage > Dr. Beate St. Pourcain

Dr. Beate St. Pourcain
Max Planck Institute for Psycholinguistics
☎ +31 24-3521964
✉ Beate.StPourcain@mpi.nl

Special Function:

- Ombudsperson in the HS (Human Sciences Section)

Short coffee break



Followed by:

Scientific Presentation - Ellen Verhoef

“Genetic influences underlying early language development
and their links with later-life traits”

M A X
P L A
N C K

MAX PLANCK INSTITUTE
FOR PSYCHOLINGUISTICS

WWW.MPI.NL